

Home

Fleece Dog Sweater

I made this pull-on sweater for my dog to wear while laying around camp after a wet day of hiking. The design features a band collar (mock turtleneck type), large leg holes for free movement, and a shirt tail to cover the rump.

Although the pattern can be scaled to fit your dog and fleece is stretchy, the tube-type construction of this sweater makes it hard to put on and take off of large dogs. This pattern is more suited to medium-sized and smaller dogs. For larger dogs, I suggest using a coat-style pattern that lays like a blanket across the back and closes with straps under the tummy and across the chest. Look in [Other Resources](#) for such a pattern. Many of the sweaters for greyhounds have this type of construction.



Size:

This pattern fits a 40 lb short-haired female mixed breed with

- Neck circumference: 17"
- Girth at chest: 27"
- Waist circumference: 21"
- Body length (collar to tail): 24"
- Chest width (shoulder to shoulder): 5"

Materials:

- 1 yard of polyester fleece material, 200 weight
- thread to match
- *Optional:* matching or contrasting lycra material for binding

Cut: One of each pattern piece

Instructions: (seam allowance is 1/4" for a plain seam or 1/2" for a top-stitched seam)

- With right sides together, stitch BACK shoulders **AB** to CHEST shoulders **AB**.
- Match BACK side **CD** to CHEST side **CD** and sew right sides together.
- Repeat 1st and 2nd steps for the other side of the sweater.
- With right sides together, fold COLLAR crosswise and sew ends **EF** together.
- Turn COLLAR to right side.
- With the right side out, fold COLLAR to match raw edges.
- Match COLLAR out side to sweater body right side and sew together.
- Finish the sweater with either a 1/4" or 1/2" hem or a [lycra binding](#).

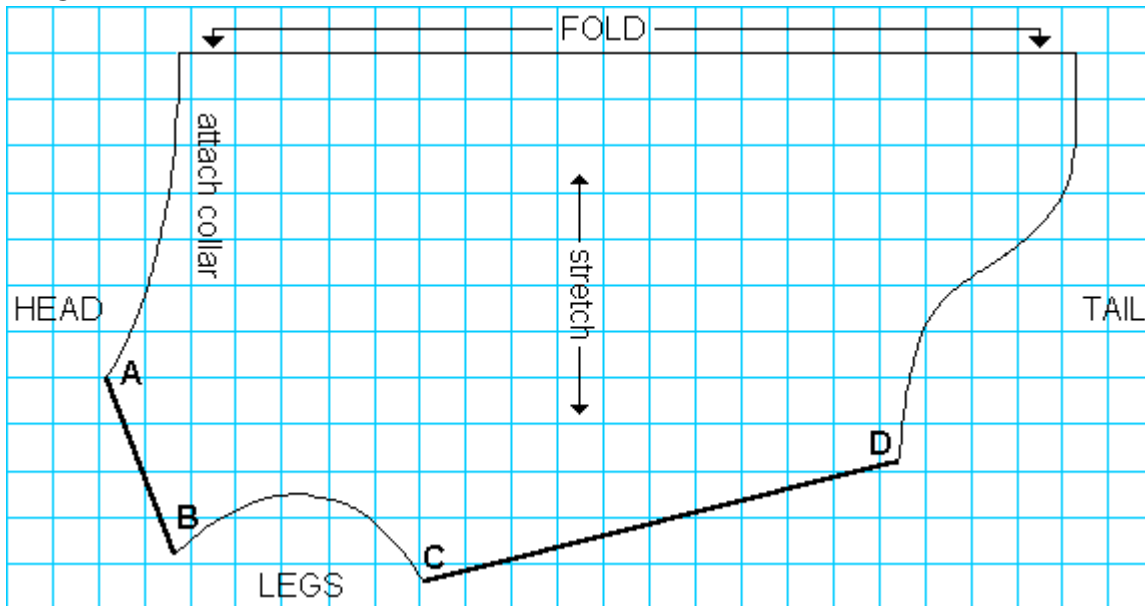
Suggestions:

- If you are making this sweater for a male dog, you may want to make the curve deeper on the tail e pattern to expose more of the tummy area.

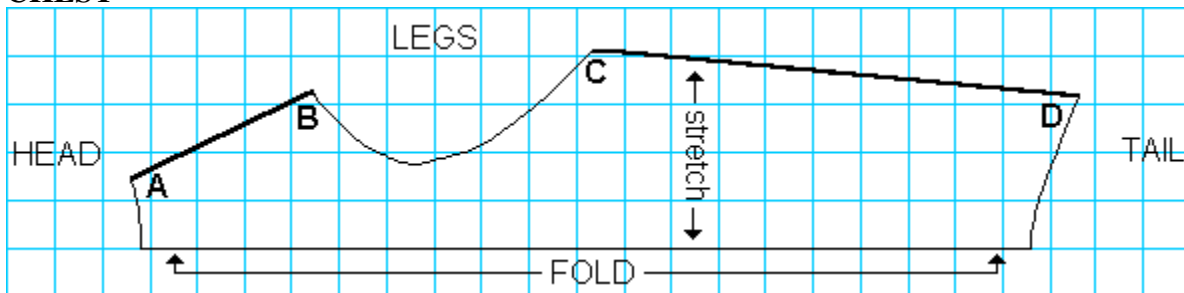
Pattern Pieces:

- Seam allowances are **NOT** included.
- **Grid Scale:** 1 square = 1 inch

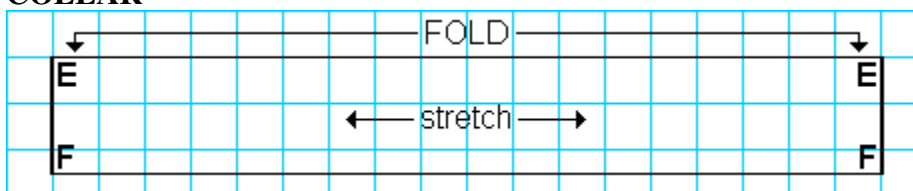
- **BACK**



- **CHEST**



- **COLLAR**



Other Resources

Sew:

- [Cool Down Coats](#) (Greyhound)
- [eHow to Make a Dog Sweatshirt](#)
- [Hooded Greyhound Coat Instructions](#)
- **Fleece:**
 - [DIY Pet Sweater](#)
 - [Greyhound Coat Instructions](#)

Crochet:

- [Bobbie's Doggie Sweater](#) (S)
- [Dog Sweater](#) (Miniature Scl)
- [Dog Sweater](#)
- [Dog Sweaters](#)
- [Doggie Serapé](#)
- [Jennifer's Patriotic Dog Ja](#)

Knit:

- [Cable Knit Sweater](#) (Greyhound)
- [Caroline's Dog Sweater](#) (Cairn Terrier)
- [Custom-Fit Dog Sweater](#)
- [Dog Sweater With Contrasting Collar](#) (West Highland Terrier)
- [Dog's Cabled Jacket](#)
- [Knit a Chihuahua Sweater](#)
- [Plain Pullover Sweater For a Small Dog](#)
- [Pup Sweater](#) (Boston Terrier)
- [Sasha's Free Knit Dog Sweater Pattern](#) (Small dog)
- **Machine:**
 - [Bond Machine Knitting Patterns for Animal Garments](#)
 - [Custom Dog Sweater for Fido](#)
 - [Dog Sweater](#) (Dachshund)
 - [Dog Sweater for Rommie](#) (Greyhound)
 - [Pixie's Sweater](#) (Jack Russell Terrier)

- [One-Piece Solid Dog Sweat](#)
- [Pet Jackets](#)
- [Ribbed Dog Sweater](#) (Mini Schnauzer)

Other:

- [Crochet Dog Bed](#)
- [Snuggles for Homeless Pet](#)
- [Polar Fleece Dog Bed](#)
- [UberPest's Homemade Dog](#)

[[Index](#) | [Technical Notes](#)]

DISCLAIMER

Page author: Dawn Rorvik (rorvikd@evergreen.edu)

Last modified: 11/30/2005